



BRITISH
PROPERTY
AWARDS

2018
★ ★ ★ ★ ★

GOLD WINNER

ESTATE AGENT
IN STAMFORD

nest
ESTATES



7 Mill Road, Yarwell

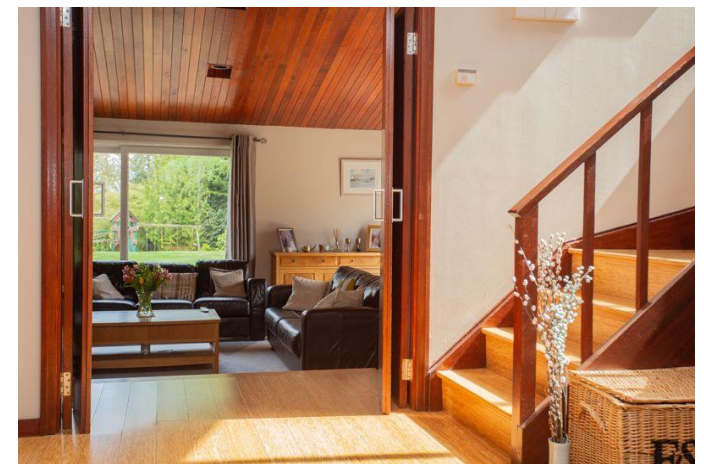
Peterborough, PE8 6PS

£835,000

SUMMARY

- Detached Four Bedroom Family Home
- 0.5 Acre Plot
- Downstairs WC, Family Bathroom & En Suite
- Open Plan Kitchen Dining Room & Utility Room
- Lounge, Reception Room & Study
- Double Garage, Car Port & Substantial Off Road Parking
- Gated Access
- Idyllic Village Location





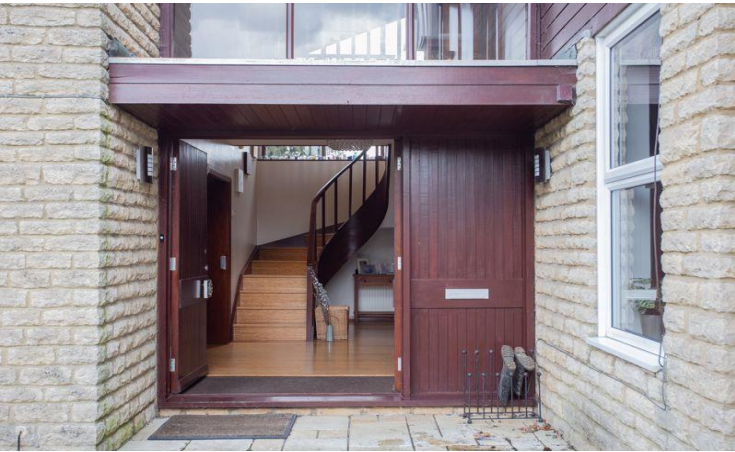












Town Land House, Yarwell, a truly distinctive four-bedroom detached residence, thoughtfully reimagined and meticulously crafted to reflect the refined elegance of Scandinavian design. Set in the heart of the picturesque village of Yarwell, this exceptional home combines clean architectural lines, natural textures, and modern comfort to create a stylish yet welcoming family sanctuary. Tucked away behind private gates and set back from the road, the property immediately conveys a sense of privacy and exclusivity.

A spacious driveway and double garage provide generous parking and storage, adding both convenience and peace of mind. Step inside through striking double doors into a wide, light-filled entrance hall that sets the tone for the space beyond. To the left, a beautifully proportioned sitting room invites relaxation, while just a few steps down, a tranquil lower-level lounge creates the perfect hideaway. Here, sliding doors open onto the front and side gardens, while an exposed stone fireplace brings warmth and charm—an ideal setting for cozy evenings or intimate entertaining. To the right, a smartly designed hallway with integrated storage leads to a convenient guest cloakroom.

The heart of the home is an impressive open-plan kitchen and dining area, recently renovated to an exceptional standard. With sleek cabinetry, a statement central island with breakfast bar, integrated wine fridge, and stylish tiled flooring, this space is designed for both function and flair. Sliding doors connect the dining area seamlessly to the rear garden, making this the perfect hub for everyday living and social gatherings. A large utility/boot room just off the kitchen offers practical storage, appliance space, and internal access to the garage, ideal for busy family life. At the front of the property, a versatile reception room is bathed in natural light via sliding glass doors. Whether used as a playroom, media room, or home office, this flexible space could also (subject to planning) be reimagined as a dramatic entrance hall or additional living area. A dedicated office provides an ideal workspace for remote professionals, featuring custom-fitted storage and a built-in desk. Upstairs, a spacious galleried landing leads to four generously sized double bedrooms, each with bespoke fitted wardrobes. The principal suite is a true retreat, complete with its own private balcony overlooking the serene rear garden and a luxurious en-suite bathroom featuring a walk-in shower and basin. The family bathroom is equally well-appointed, with a sleek four-piece suite and ample space for family needs.

Set on a beautifully landscaped plot of just over half an acre (STS), the gardens are a tranquil haven, framed by mature trees and thoughtfully designed planting for maximum privacy. Multiple patio areas provide ideal spots for alfresco dining or relaxing in the sun. At the rear of the garden, a charming summer house offers additional versatility—perfect for a garden studio, peaceful retreat, or extra storage.

This remarkable home is a rare blend of modern design and countryside charm. With its Scandinavian-inspired aesthetic, premium finishes, and enviable setting, it offers a lifestyle of sophistication and serenity. Opportunities like this are few and far between—seize the chance to call this extraordinary residence your own.

Tenure: Freehold

EPC Rating: D

Council Tax Band: TBC

Local Authority: East Northamptonshire Council

DISCLAIMER

Money Laundering Regulation: People who intend to purchase will be asked to show us documents to prove their identity. This will allow us to agree the sale and move forward with your purchase as quickly as possible. 2. We do our best to make sure our sales particulars are as accurate and reliable as we can. However, they are a general guide to the property and if something is particularly important to you, we will be happy to check information for you. As regards measurements, the approximate room sizes are intended as a general guide. You must verify dimensions of rooms yourself before ordering any carpets or furniture. 3. As regards services, we have not tested the services or any equipment including appliances in this property. We advise prospective buyers to carry out their own survey, service report before making their final offer to purchase. 4. This sales information has been issued in good faith. However, it does not constitute representation of fact or form part of any offer or contract. The information referred to in these particulars should be independently verified by any prospective buyer or tenant. Neither Nest Estates nor any of its employees has the authority to make or give any representation or warranty whatever in relation to this property.

